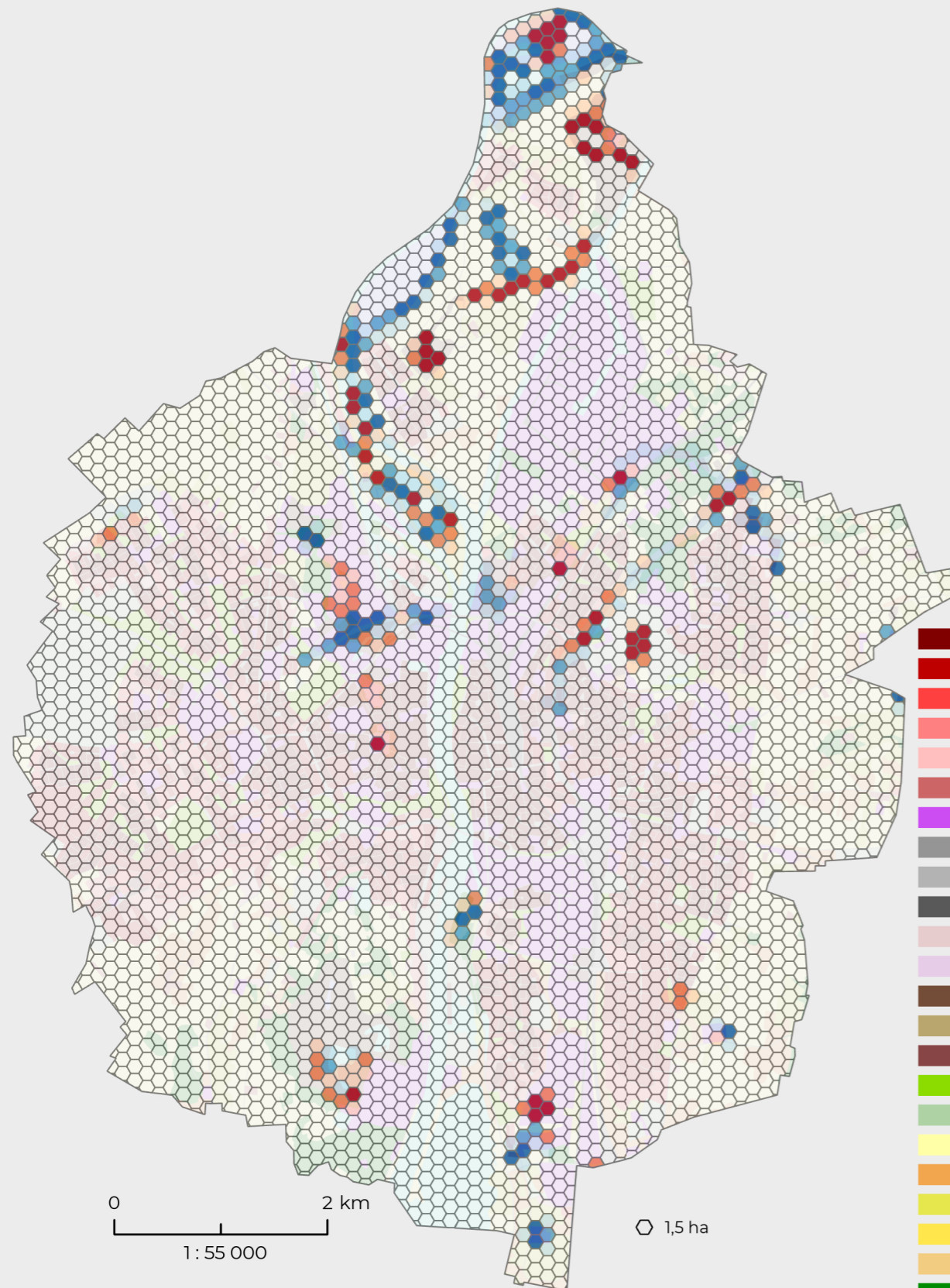
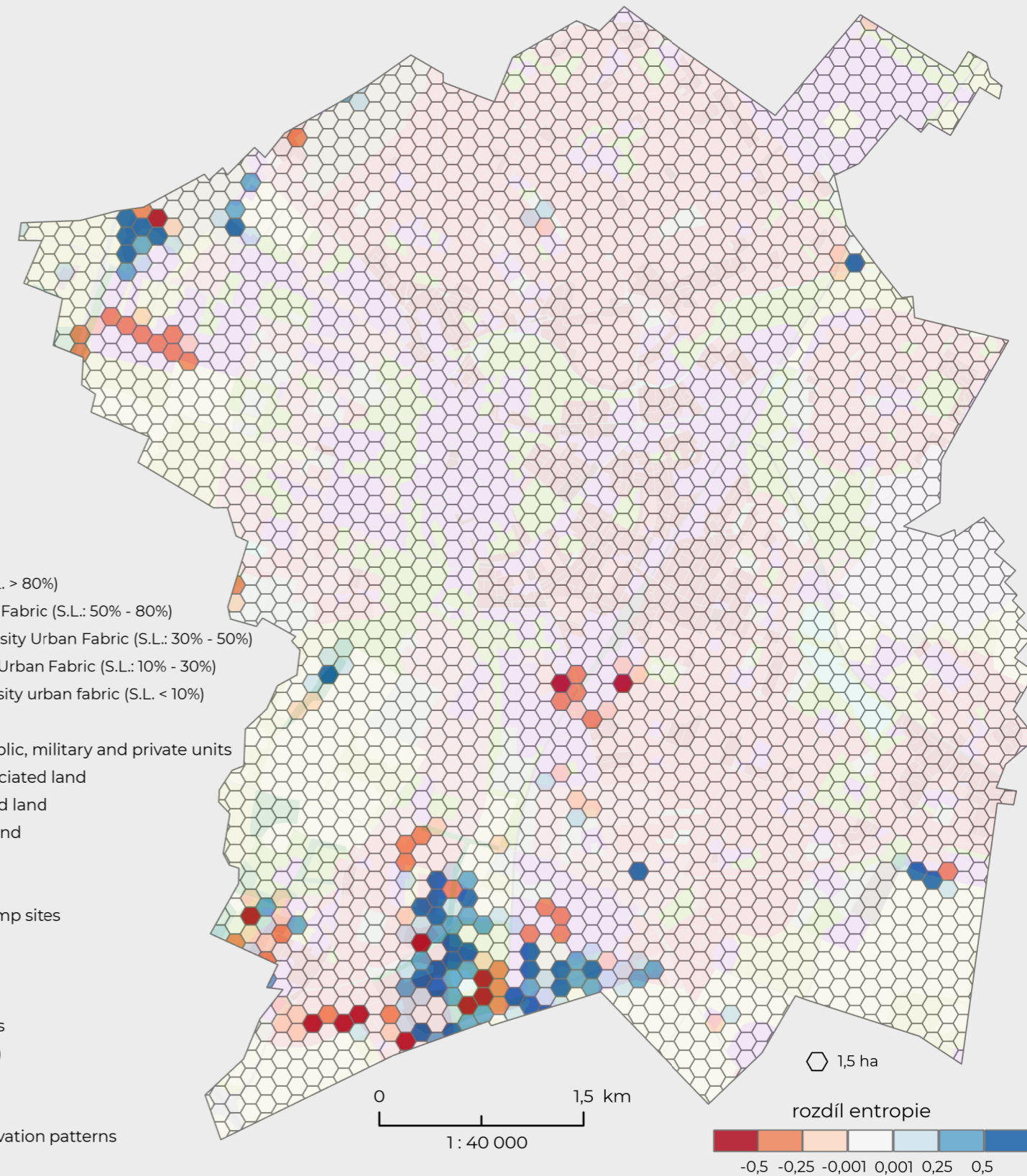


ZMĚNA ENTROPIE V HEXAGONOVÝCH BUŇKÁCH

Změna entropie v nizozemském městě Maastricht mezi lety 2012 a 2018



Změna entropie v anglickém městě Cambridge mezi lety 2012 a 2018



- 11100: Continuous Urban fabric (S.L. > 80%)
- 11210: Discontinuous Dense Urban Fabric (S.L.: 50% - 80%)
- 11220: Discontinuous Medium Density Urban Fabric (S.L.: 30% - 50%)
- 11230: Discontinuous Low Density Urban Fabric (S.L.: 10% - 30%)
- 11240: Discontinuous very low density urban fabric (S.L. < 10%)
- 11300: Isolated Structures
- 12100: Industrial, commercial, public, military and private units
- 12210: Fast transit roads and associated land
- 12220: Other roads and associated land
- 12230: Railways and associated land
- 12300: Port areas
- 12400: Airports
- 13100: Mineral extraction and dump sites
- 13300: Construction sites
- 13400: Land without current use
- 14100: Green urban areas
- 14200: Sports and leisure facilities
- 21000: Arable land (annual crops)
- 22000: Permanent crops
- 23000: Pastures
- 24000: Complex and mixed cultivation patterns
- 25000: Orchards
- 31000: Forests
- 32000: Herbaceous vegetation associations
- 33000: Open spaces with little or no vegetations
- 40000: Wetlands
- 50000: Water

